

IMPERIAL COUNTY TRANSPORTATION COMMISSION



“Our mission is to enhance the quality of life and regional economy of Imperial County by ensuring safe, responsive and efficient transportation and transit solutions.”

FISCAL YEAR 2016/2017 OVERALL WORK PLAN & BUDGET

(Adopted July 27, 2016)

This page is intentionally left blank.



George Nava, Council Member
City of Brawley

Maria Nava-Froelich, Mayor
City of Calipatria

Joong Kim, Council Member
City of Calexico

Cheryl Viegas-Walker, Council Member
City of El Centro

Jim Predmore, Chairman
Mayor
City of Holtville

Doug Cox, Mayor
City of Imperial

Larry Ritchie, Mayor Pro Tem
City of Westmorland

Jack Terrazas, Supervisor District 2
County of Imperial

Ryan Kelley, Supervisor District 4
County of Imperial

Norma Sierra-Galindo
Director Division 2
Imperial Irrigation District

Laurie Berman, Director
California Department of Transportation
District 11

Mark Baza,
Executive Director

Fiscal Year 2016/2017 Overall Work Plan & Budget

This page is intentionally left blank.

TABLE OF CONTENTS

EXECUTIVE SUMMARY	1-8
THE ICTC AND ITS RESPONSIBILITIES	10
ORGANIZATIONAL STRUCTURE	11-12
Regional Coordination/ Committee Structure	11
ICTC Staff Organization Structure	12
COMMUNITY OVERVIEW AND INTRODUCTION	13
The Community We Serve	13
Introduction	13
REVENUES AND FUNDING SOURCES	14-15
Federal Revenues and Fund Sources	14
State Revenues and Fund Sources	15
Local Revenues and Fund Sources	15
EXPENDITURES	16-18
Expenses	16
Table 1— Fund Sources of the ICTC	17
Table 2—OWP and Budget Summary	18
REGIONAL TRANSPORTATION PLANNING AND PROGRAM MANAGEMENT	19-20
Table 3—Regional PPM Revenues and Expenditures	21
ICTC TRANSIT PLANNING AND PROGRAM MANAGEMENT	23-26
Overview	23
The Previous Years	23
Table 4—Transit and Planning PPM Revenues and Expenditures	24
Table 5—Transit Finance Plan	25
Table 6—Transit PPM Revenues and Expenditures	26
REGIONAL TRANSIT PLANNING	28
REGIONAL PUBLIC TRANSIT SERVICES	29-31
INTRA-CITY DEMAND RESPONSE PUBLIC TRANSIT	31
BICYCLE AND PEDESTRIAN PROJECTS (TDA-LTF ARTICLE 3)	32
LOCAL BUS STOP AND SHELTERS PROGRAM (TDA-LTF ARTICLE 8e)	32
CAPITAL IMPROVEMENT PROGRAM	33-34
ADMINISTRATION / OPERATIONS / PROGRAMS	35
APPENDIX A—ICTC Cost Sharing Agreement	37

This page is intentionally left blank.



1405 N. IMPERIAL AVE. SUITE 1
EL CENTRO, CA 92243-2875
PHONE: (760) 592-4494
FAX: (760) 592-4497

July 27, 2016

James Predmore, Chairman
Imperial County Transportation Commission
1405 N. Imperial Avenue, Suite 1
El Centro, CA 92243

SUBJECT: ICTC Overall Work Program (OWP) and Budget, FY 2016-2017

Dear Commission Members:

The previous fiscal year of FY 2015-2016 was a productive year for ICTC in partnership with our member agencies, and our U.S. regional, state and federal transportation partners, such as, the Southern California Association of Governments (SCAG), California Department of Transportation (Caltrans), San Diego Association of Governments (SANDAG), California Transportation Commission (CTC), Federal Highway Administration (FHWA), Federal Transit Administration (FTA), U.S. Customs and Border Protection, the U.S. General Services Administration (GSA); and our cross-border partners in the City of Mexicali and State of Baja California, Mexico. The following are highlights of our major accomplishments initiated or completed during FY 2015-2016:

- Completed the contract advertisement and award for IVT MedTrans and IVT Ride El Centro for transit services that began on July 1, 2016
- Launched a Wi-Fi demo service on all sixteen (16) 40 foot IVT buses and continued to add industry standard security cameras on all ICTC owned buses
- Continued to replace contractor owned vehicles, and, expanded the fleet with thirty – two (32) new buses and two (2) new transit operation service vehicles to our IVT branded fleet.
- Hired one new staff to serve as Mobility Coordinator for our senior citizen and Americans with Disabilities Act (ADA) transit programs and services – In the first four months staff has successfully assisted with the outreach and coordination with our transit operator, social service and medical service providers
- Achieved approval for the FY 2016-17 State Transportation Improvement Program (STIP) that includes \$38.7 million for the I-8 Imperial Avenue Interchange and ICTC's Regional Plans and Program funds
- Achieved approval for the FY 2016-17 Federal Transportation Improvement Program (FTIP) that includes \$470 million for a combination of local roadway and bridge projects, Interstate 8 and other state highway pavement improvement projects
- For FY 2015-16, managed and administered distribution of \$14.7 Million in Measure D (half-cent sales tax) revenues for member agency road projects, and regional transit and highway projects

**CITIES OF BRAWLEY, CALEXICO, CALIPATRIA, EL CENTRO, HOLTVILLE, IMPERIAL, WESTMORLAND,
IMPERIAL IRRIGATION DISTRICT AND COUNTY OF IMPERIAL**

- In partnership with Western Riverside Council of Governments (WRCOG) and Renovate America implemented the HERO/PACE energy savings program that has completed \$1.6 million in local residential projects and to date \$13 million in projects have been approved
- Completed the following transit and transportation studies of regional and national significance:
 - The Safe Routes to School Regional Master Plan
 - The SDSU-IVC Transit Shuttle Analysis and Feasibility Study
 - The Cross-Border and Goods Movement Analysis Study, Phase 2
- In partnership with the Imperial Valley Economic Development Corporation (IVEDC) hosted our second annual General Assembly and Economic Summit; and,
- Initiated the following studies in partnership with Caltrans, SCAG, SANDAG, member agencies and local partners:
 - Imperial/San Diego Mobility Hub Strategy
 - Fresh Look at Impacts of Border Delays for the California-Baja California Binational Region - The study area will include all six land ports of entry of Imperial and San Diego to determine Greenhouse Gas (GHG) emission and economic impacts of delay

The studies initiated are scheduled to be completed during the upcoming FY 2016-17.

As in the past, the OWP and Budget is divided into three sections: the Budget Summary, and the core programs of Regional Transportation Planning and Programming, and, Transit Planning and Program Management. Our Budget Summary contains all the program overviews and projections and is intended to provide a general understanding of ICTC's budgeted activities and programs for the coming fiscal year. The total ICTC Budget is estimated at \$15.6 million that will maintain our key services and programs; ICTC salaries and benefits; ICTC's administration and operation costs; the 100 transit operations staff (bus drivers, dispatchers, supervisors and operation managers) and related contract costs. The \$15.6 million budget amount does not include Measure D revenues, or state and federal funds allocated for state highways, local roads and bridges in Imperial Valley.

This budget proposes ICTC staffing of the eight full-time positions to manage the programs and services described in this budget. The full-time positions includes one Office Technician, one Secretary/Clerk to Commission, one Administrative Analyst, one Mobility Coordinator, three transportation planner positions from entry-level to senior-level in classifications (responsible for: Regional Transportation Planning and Programming, and Transit Planning, Programming, Contracts and Transit Service Administration), and the Executive Director.

The budget includes funding for consultant and vendor services to continue to support the Commission's administrative functions, i.e., accounts payable, accounts receivable, payroll, various program and fiscal audits, and support services for human resources, legal counsel, planning and project programming.

A workshop was conducted on May 25, 2016 and input was received from members of the Commission, and subsequently with the Management Committee on June 15, 2016.

The Draft Imperial County Transportation Commission (ICTC) FY 2016-2017 Overall Work Plan (OWP) and Budget is hereby presented for your review and recommendation prior to finalization for approval to our ICTC Board. Our Draft OWP and Budget is balanced and provides for development and implementation of vital transportation projects and programs for our region.

The ICTC Management Committee met on July 13, 2016 and recommended to forward the Draft ICTC Overall Work Program (OWP) and Budget for FY 2016-2017 to the Commission for review and approval.

MARK BAZA
Executive Director

EXECUTIVE SUMMARY—FY 2016/2017 Overall Work Plan & Budget

Summary of Major Programs and Initiatives:

Financial Management

ICTC will strive to provide fiscally responsible and economic services that also produce timely and accurate data for the Commission and the public. Staff and consultant services have been established for performing the day to day accounting functions consisting of cash management, accounts receivable, accounts payable, payroll, general ledger and financial reports for each of the various federal, state and local program fund sources and the agency's budget.

Community Outreach/Public Information/Marketing

The FY 2016/2017 ICTC Community Outreach/Public Information/Marketing program will continue efforts to incorporate all ICTC services in one comprehensive identifiable entity. Our goal will be to provide access for our member agencies, key stakeholders and the general public. We will continue our work to create a recognizable brand with the services and programs offered by the ICTC. In partnership with SCAG, outreach activities will be undertaken to incorporate our Imperial program of projects into SCAG's Draft 2016 Regional Transportation Plan (RTP) and Sustainable Communities Strategy (SCS).

Key elements of our outreach program include the administration and management of information and agendas prepared for the Commission and Management Committee meetings; the two ICTC Technical Advisory Committees; the Imperial-Mexicali Binational Alliance; the Unmet Transit Needs process; and, other public outreach opportunities within Imperial Valley.

In FY 2013/2014, ICTC initiated a partnership with Western Riverside Council of Governments (WRCOG) for the California HERO Program. In FY 2016/2017, ICTC will coordinate with participating member agencies to assist WRCOG, as needed, for efficient coordination of the California HERO Program.

In FY 2014/2015, ICTC in partnership with the Imperial Valley Economic Development Corporation (IVEDC) hosted its first ever General Assembly and Economic Summit. In FY 2015/2016, a 2nd Annual General Assembly and Economic Summit was also a successful event. For FY 2016/2017, a 3rd Annual General Assembly and Economic Summit is anticipated to be a one-day event, with the Economic Summit during the day and the General Assembly in the evening.

As a follow-up to ICTC's 2014 Strategic Plan, the Executive Director will work with City/County Managers/CEO's to develop a Joint Powers Authority agreement and structure for a new Imperial County Council of Governments (COG). The goal of the proposed COG is to provide a regional forum for non-transportation issues and programs.

Regional Transportation Planning and Program Management

ICTC will continue efforts with SCAG and Caltrans District 11 to update the Imperial County Transportation Model. The regional transportation model is a critical planning tool for evaluating and prioritizing major transportation improvements in the County. Staff will also work to identify funding opportunities for development of a project study report (PSR) for the Forrester Road Corridor from I-8 to SR78/86. The PSR is a critical planning/preliminary engineering study necessary for the Forrester Road Corridor and Westmorland Bypass from I-8 to SR-78/86.

As a lead agency in regional transportation efforts, ICTC is also actively involved in cross-border transportation planning and development. ICTC is a co-lead agency in successfully initiating and implementing the "Imperial-Mexicali Binational Alliance." The goals for the Alliance are focused on Cross-border transportation infrastructure, economic development and environmental issues. In FY 2016/2017, ICTC will be working with Caltrans and SANDAG to implement a study to quantify the economic impacts and Greenhouse Gas (GHG) impacts of delay at the six existing California/Baja California ports of entry.

Capital Projects The Capital Projects program include ICTC efforts to provide oversight, planning, project management and monitoring for on-going roadway, highway, and ports of entry improvement projects. The key regional projects include, the City of Imperial's Transit Center; the I-8/Dogwood Road Bridge Widening; I-8/Imperial Avenue Interchange, State Route 98 Widening (West of SR-111)/Cesar Chavez Blvd. improvements; proposed widening of existing Forrester Road Corridor;

EXECUTIVE SUMMARY—FY 2016/2017 Overall Work Plan & Budget

Phase 1 construction and, expansion of the Calexico West Port of Entry; proposed expansion of the Calexico East Port of Entry; and, other transit, pedestrian, and bicycle capital improvements referenced in the OWP and Budget report.

Transportation Improvement Program (TIP) The Transportation Improvement Program activity encompasses development and amendments to the State and Federal Transportation Improvement Programs (TIPs), incorporating projects that may receive awards and project amendments as needed. Staff will continue to work closely with local agencies, SCAG, Caltrans, California Transportation Commission staff to ensure the timely utilization of the following programmed funds: Regional Surface Transportation Program (RSTP), Congestion Management Air Quality (CMAQ), the State’s Transportation Improvement Program (STIP), and Active Transportation Program (ATP).

In FY 2015/2016, ICTC and SCAG in partnership with SDSU and Imperial Valley College completed the San Diego State University/Imperial Valley College Shuttle Analysis. In FY 2016/2017, ICTC will complete a Mobility Hub Strategy for San Diego and Imperial Counties. ICTC will pursue funding to carry out a Project Study Report (PSR) for Forrester Road Corridor and Westmorland Bypass.

The tables below list the capital projects planned and programmed (Funds Authorized) for construction.

Capital Projects	Funding
I-8/Dogwood Bridge Widening	\$33,120,000*
I-8/Imperial Avenue Interchange	\$37,840,000*
State Route 98 and Cesar Chavez Blvd. Improvements – Calexico West Port of Entry	\$21,253,000*
Binational Partnership Toll Pilot Project – Calexico East Port of Entry Bridge Widening, Auto and Truck Lane Expansion	\$65,000,000
Phase 1 Construction & Expansion – Calexico West Port of Entry	\$98,000,000
Phase 2 Construction & Expansion – Calexico West Port of Entry	\$248,000,000
TOTAL	\$503,213,000

*Source: Federal Transportation Improvement Program (FTIP)

Planning & Transportation Improvement Program Projects	Funding
Regional Surface Transportation Program (RSTP)	\$2,057,826*
Congestion Mitigation & Air Quality (CMAQ)	\$1,495,696*
SHOPP Roadway Preservation Program	\$453,070,000
National Highway System – STP – Highway Maintenance	\$11,900,000
Highway Bridge Program (HBP)	\$1,584,000
TOTAL	\$470,107,522

*Source: Federal Transportation Improvement Program (FTIP)

EXECUTIVE SUMMARY—FY 2016/2017 Overall Work Plan & Budget

Transit Planning and Program Management

The Transit Planning and Program Management work element and budget receives input from three sources; the annual Unmet Transit Needs Public Hearing; a review of available revenues; and, the development of service budgets in partnership with the member agencies. The following contains this year's recommended plan for funding transit planning, programs and operational requirements throughout Imperial County.

Approximately 100 additional persons are employed directly or indirectly through ICTC contracts with transit operators, local vendors and consultant services in support of the planning activities and transit operations. Funding is also spent locally when and where possible for additional services including; fuel, tires, uniforms, heavy duty mechanical, internet and marketing services.

ICTC in partnership with the City of Calexico will pursue funding for design, right-of-way and construction to complete the Calexico Intermodal Transportation Center. ICTC will also pursue funding to implement the planned transit circulators in the cities of Calexico (Garnet Line) and Imperial (Red Line) approved by both Cities and Commission.

The transit budget reflects revenue and expenses of approximately \$15.2 million. In addition to the transit operations and capital funding, the table below lists the transit planning and program management projects.

Transit Planning and Program Management Projects	Funding
Bus Stop Inventory and Information Program (Phase 3)	\$150,000
Passenger Statistical Summary (IVT)	\$100,000
TDA Triennial Performance Audit	\$85,000
Update to the Short Range Transit Plan (SRTP)	\$150,000
TOTAL	\$485,000

FEDERAL REVENUES AND FUND SOURCES

Federal Transportation Administration (FTA) Section 5307 Urban grant funds received in arrears ICTC totaling \$2.2 million are programmed to be utilized for the IVT, IVT Access and IVT- Blue and Green Line transit systems. Actual apportionments for this fund are typically not available until October of each year. The FY 2016-17 budget estimates are based on apportionments from prior years.

Federal Transportation Administration (FTA) Section 5309 Federal earmark funds are budgeted for the construction phase of bus transfer terminal in Imperial in the amount of \$747,000.

Federal Transportation Administration (FTA) Section 5311 Rural funds received in arrears totaling \$1.2 Million are programmed to be utilized for the IVT fixed route transit system in the rural area; IVT Gold Line; and Brawley Bus Stop Improvement Program, Phase 1 and 2. Actual apportionments for this fund are typically not available until October of each year. The numbers for FY 2016-17 are estimates based on apportionments from prior years.

STATE REVENUES AND FUND SOURCES

State Transportation Improvement Program Planning and Program Management (STIP-PPM) Funds have been utilized for expenses associated with planning and programming activities. The California Transportation Commission approved the use of these funds annual since May 2010 based on the region's request. The funds available in FY 2016/2017 are \$300,000.

State Transit Assistance (STA) Funds received quarterly are restricted to transit expenses only and are estimated at \$1,169,031.

EXECUTIVE SUMMARY—FY 2016/2017 Overall Work Plan & Budget

Local Transportation Funds (LTF) Funds received monthly from the State Controllers office based on the retail sales tax collected locally totaling near \$7.02 million for transit purposes.

Funds in excess of transit services, if any, are then available for bus stop maintenance and improvements, and bicycle and pedestrian projects, etc. Available revenue received in the prior year, in excess of the previous year's budgeted amount is reprogrammed as "Revenue Stabilization" or "Operating Reserve".

Public Transportation Modernization Improvement and Service Enhancement Account (PTMISEA) Funds are expected to be received annually, under the Bond Act Prop 1b approved by voters in November 2006. Grant funds are programmed for transit vehicles for a total sum of \$186,250.

California Security and Transit Grant Program (CSTGP) Funds will be utilized for solar lighting facilities at the Imperial Transfer terminal. Grant funds are also budgeted for the installation of security cameras on IVT and IVT ACCESS buses for a total sum of \$133,338.

State Planning and Research (SP&R) Funds are eligible for planning purposes only. ICTC will partner with Caltrans and the San Diego Association of Governments (SANDAG) to carry out the California/Baja California Ports of Entry: Economic Impacts of Delay and Greenhouse Gas (GHG) Impacts of Delay. SANDAG will serve as the head agency for this project.

LOCAL REVENUES AND FUND SOURCES

Fare Revenue funds to be received from passengers or affiliated agencies on their behalf, as a portion of a cost of the passenger's trip.

On-Hand funds are programmed when there is a balance on account typically as a result of a cost savings, a delay in a project start date or unanticipated revenues from the prior year.

Local Transportation Authority (LTA 2%) these funds are listed due to language in the new LTA ordinance allowing for the use of 2% of the funding for transit services. The Authority took action on May 26th 2010, authorizing the use of these funds for local transit services for seniors.

SCAG/Member Agency Contributions Member agency contributions are based upon a formula adopted by the Commission on May 26th, 2010., see Appendix A on page 37. SCAG contributions include shared costs for the Office Assistant / Receptionist position.

EXPENDITURES

Expenses in this report are summarized under the following categories:

Regional Transit Services Public transit serving multiple jurisdictions and multiple population groups

Local Transit Services Public transit serving individual jurisdictions and single population groups

Transit Capital Projects Projects with design and/or capital expenditures for fixed facilities and vehicles

ICTC Administration and Planning These expenses are separated into three sub-elements: Transit Administration, Transit Planning and Program Management; and, Transportation Planning (Regional Planning activities).

Operating Reserve An operating reserve is established to provide revenue stabilization.

Bikes and Peds Article 3 (Bicycle and Pedestrian Projects) An expense for 3% of the available LTF revenue has been listed. A call for local agency projects is scheduled on an annual basis.

EXECUTIVE SUMMARY—FY 2016/2017 Overall Work Plan & Budget

IMPERIAL COUNTY TRANSPORTATION COMMISSION FUNDING SOURCES					Budget	Estimated Actual	Budget	
					FY 2015-16	FY 2015-16	FY 2016-17	%
1	2	3	4	5	6	7	8	9
REVENUES								
<u>FEDERAL</u>								
A	FTA SEC 5307 (Urban)				\$2,276,290	\$2,276,290	\$2,276,290	0.0%
B	FTA SEC 5309 - Imperial Transfer Terminal				\$747,000	\$0	\$747,000	0.0%
C	FTA SEC 5310 Regional Mobility Management				\$144,000	\$14,790	\$129,210	-10.3%
D	FTA SEC 5311 (Rural) - Rural Transit Services				\$1,218,578	\$261,436	\$1,218,578	0.0%
E	SUBTOTAL				\$4,385,868	\$2,552,516	\$4,371,078	-0.3%
<u>STATE</u>								
F	TDA - LOCAL TRANSPORTATION FUND (LTF)				\$8,848,062	\$6,151,173	\$7,027,401	-20.6%
G	TDA - STATE TRANSIT ASSISTANCE (STA)				\$904,208	\$904,208	\$1,169,031	29.3%
H	STIP- PLANNING, PROGRAMMING & MONITORING (PPM)				\$19,000	\$19,000	\$300,000	1478.9%
I	STATE PLANNING and RESEARCH (SP &R)				\$175,000	\$174,947	\$0	-100.0%
J	PROP 1B - PTMISEA				\$4,363,659	\$4,184,766	\$186,250	-95.7%
K	PROP 1B - CTSGP				\$378,125	\$81,428	\$133,338	-64.7%
L	SUBTOTAL				\$14,688,054	\$11,515,522	\$8,816,020	-40.0%
<u>LOCAL</u>								
M	FARE REVENUE				\$1,060,174	\$873,559	\$1,033,157	-2.5%
N	ON HAND				\$150,000	\$150,800	\$157,900	5.3%
O	LOCAL TRANSPORTATION AUTHORITY (LTA) 2% transit set a side				\$300,000	\$300,000	\$350,000	16.7%
P	LOCAL TRANSPORTATION AUTHORITY (LTA) 5% set a side				\$708,240	\$0	\$803,240	13.4%
Q	SCAG/MEMBER AGENCY CONTRIBUTIONS				\$350,000	\$130,000	\$132,500	-62.1%
R	SUBTOTAL				\$2,568,414	\$1,454,359	\$2,476,797	-3.6%
S	TOTAL				\$21,642,336	\$15,522,397	\$15,663,895	-27.6%
EXPENDITURES								
T	REGIONAL TRANSIT				\$6,993,580	\$5,113,656	\$6,794,880	-2.8%
U	LOCAL TRANSIT				\$1,552,207	\$1,195,627	\$1,820,131	17.3%
V	TRANSIT CAPITAL (Vehicle Prcmt & Transit Facility Construction)				\$8,334,316	\$4,957,278	\$3,425,066	-58.9%
W	TRANSIT CAPITAL Miscellaneous				\$413,125	\$81,428	\$168,338	-59.3%
X	TRANSIT OPS maintenance				\$219,500	\$194,500	\$220,000	0.2%
Y	ADMINISTRATION AND PLANNING				\$1,657,144	\$1,507,144	\$2,111,480	27.4%
Z	TRANSIT CAPITAL FLEET RESERVE				\$1,814,360	\$1,814,360	\$900,000	-50.4%
AA	REVENUE STABILIZATION/ OPERATING RESERVES				\$478,404	\$478,404	\$35,000	-92.7%
BB	BIKES AND PEDS Art 3				\$180,000	\$180,000	\$189,000	5.0%
CC	TOTAL				\$21,642,636	\$15,522,397	\$15,663,895	-27.6%

EXECUTIVE SUMMARY—FY 2016/2017 Overall Work Plan & Budget

IMPERIAL COUNTY TRANSPORTATION COMMISSION FY 2016-17 OVERALL WORK PROGRAM AND TRANSIT PROGRAMS FINANCE PLAN												
1	2	3	4	5	6	7	8	9	10	11	12	13
Projected Revenues	SUBTOTAL		TOTAL		STATE		TOTAL		TOTAL		TOTAL	
FEDERAL	2016-17	2016-17	2016-17	2016-17	2016-17	2016-17	2016-17	2016-17	2016-17	2016-17	2016-17	2016-17
A	FTA Sec 5307 Urban	\$2,276,290	\$2,276,290					STA		\$300,000		
B	FTA Sec 5309 Capital	\$747,000	\$747,000							\$869,031		\$1,169,031
C	FTA 5310 MMP	\$129,210	\$129,210					STIP - PPM		\$300,000		\$900,000
D	FTA 5311 Rural	\$957,142	\$957,142					LTF SB325		\$727,401		\$7,027,401
E		\$261,436	\$261,436							\$6,300,000		\$6,300,000
F					\$1,218,578							
G						\$4,371,078						
H												
I												
J	LOCAL											
K	Fare revenue	\$1,033,157	\$1,033,157					PTMSEA		\$186,250		\$186,250
L	On Hand	\$157,900	\$157,900							\$133,338		\$133,338
M	LTA, 2% and 5%	\$1,153,240	\$1,153,240					CTSGP				
N	SCAG member contrib	\$132,500	\$132,500									
O	Total	6,794,880	856,144	-	-	-	-	261,436	2,276,290	1,169,031	2,231,979	6,794,880
P	Total	1,620,131	177,014	-	350,000	-	-	-	-	-	1,289,117	1,643,117
Q	Total	522,000	-	-	-	-	-	-	-	-	522,000	522,000
R	Total	2,935,066	-	-	803,240	-	165,250	1,704,142	-	-	209,434	2,903,066
S	Total	220,000	-	-	-	-	-	-	-	-	220,000	220,000
T	Total	165,338	-	-	-	-	133,388	-	-	-	35,000	168,338
U	Total	937,080	-	-	-	15,000	-	129,210	-	-	792,870	962,080
V	Total	485,000	-	-	-	-	-	-	-	-	335,000	485,000
W	Total	689,400	-	-	300,000	-	117,500	-	-	-	264,000	806,900
Y	Total	2,111,480	157,900	-	300,000	-	132,500	129,210	-	-	1,391,870	3,143,980
Z	Total	900,000	-	-	-	-	-	-	-	-	900,000	900,000
AA	Total	35,000	-	-	-	-	-	-	-	-	35,000	35,000
BB	Total	189,000	-	-	-	-	-	-	-	-	189,000	189,000
CC	Total	15,663,895	1,033,157	157,900	300,000	132,500	319,588	2,094,788	2,276,290	1,169,031	7,027,401	15,663,895

This page is intentionally left blank.



IMPERIAL COUNTY TRANSPORTATION COMMISSION

FY 2016/2017 OVERALL WORK PLAN AND BUDGET

ICTC

Board and Executive Director

George Nava, Council Member
City of Brawley

Maria Nava-Froelich, Mayor
City of Calipatria

Joong Kim, Council Member
City of Calexico

Cheryl Viegas-Walker, Council
Member
City of El Centro

Jim Predmore, Mayor
City of Holtville

Doug Cox, Mayor
City of Imperial

Larry Ritchie, Mayor Pro Tem
City of Westmorland

Jack Terrazas, Supervisor
County of Imperial

Ryan Kelley, Supervisor
Chair, Board of Supervisors
County of Imperial

Norma Sierra-Galindo, Director
Imperial Irrigation District

Laurie Berman, Director
California Department of
Transportation, District 11
(Ex-Officio)

Mark Baza,
Executive Director

THE ICTC AND ITS RESPONSIBILITIES

The ICTC or “Commission” was established under Senate Bill 607 (SB 607 - Ducheny) in 2009, and became effective on January 1, 2010. As a county transportation commission, ICTC on behalf of its member agencies are enabled to exercise leadership in the regional transportation planning and programming process. The ICTC will act in accordance with all applicable laws and statutes for county transportation commissions. ICTC body will guide the development of the Long Range Transportation Plan for the Imperial region and its Regional, State and Federal transportation improvement programs (TIPs) and their updates, including, but not limited to: the distribution and oversight of Local Transportation Fund monies; the preparation and submittal of applications for transportation related funds; approve the allocation of and claims for Transportation Development Act funds; the planning, programming and administration of regional transit services; and, encourage active citizen participation in the development and implementation of various transportation-related plans and programs. The ICTC is responsible to carry out the above activities in partnership with the California Department of Transportation (Caltrans) and our designated Metropolitan Planning Organization (MPO) the Southern California Association of Governments (SCAG).

As established under SB 607 and ICTC Bylaws, the ICTC Board is currently composed of ten voting members and one non-voting member consisting of two members of the Imperial County Board of Supervisors; one member from each incorporated city (seven) within Imperial County who shall be the mayor of the city or a member of its city council; one member of the Board of Directors of the Imperial Irrigation District; and, one non-voting member appointed by the Governor representing the California Department of Transportation (Caltrans). As shown in the column to the left. In the future the governing Board of the commission may also include the following ex-officio or non-voting members: one member representing the State of Baja California, Mexico, who may be appointed by the governor of the state; one member representing the municipality of Mexicali, Mexico, who may be the mayor or his or her designee; one member representing the Consul of Mexico in Calexico, California, who may be the consul or his or her designee; and, one member representing any federally recognized Native American tribe in Imperial County.

In addition to the responsibilities described above, the Commission provides direct management, administration and oversight for the following local and regional transportation programs:

- Imperial Valley Transit (IVT) System and its Inner City Circulator Services (Blue, Green and Gold Lines)
- MedTrans (Non-Emergency Medical Demand Response Service to San Diego)
- IVT Access (Americans with Disabilities Act - ADA Paratransit Service)
- IVT RIDE (Dial-A-Ride Services in the Cities of Brawley, Calexico, El Centro, Imperial and the Westshores Community)
- Local Transportation Authority (Measure D Sales Tax Program)

Other regional responsibilities include the administration of the Transportation Development Act (TDA) program, the Americans with Disabilities Act (ADA) Certification and Eligibility process. Additionally, ICTC has established an agreement with the Quechan Tribe and Yuma County Intergovernmental Public Transportation Authority (YCIPTA) to provide transit services to eastern Imperial County. The service is operated by YCIPTA as described on page 30.



IMPERIAL COUNTY TRANSPORTATION COMMISSION

FY 2016/2017 OVERALL WORK PLAN AND BUDGET

ORGANIZATIONAL STRUCTURE

REGIONAL COORDINATION

To encourage regional and public participation in the development of ICTC’s policies and priorities the ICTC staff provides support to standing regional committees, described below. The Commission has the option of creating special purpose committees as the need arises.

Management Committee The purpose of the Management Committee is to serve as a policy advisory to the Board. Membership of the Management Committee includes two members from the County of Imperial and one member from each member city or agency, that include the City Managers, Chief Executive Officer, General Manager or their designated representative.

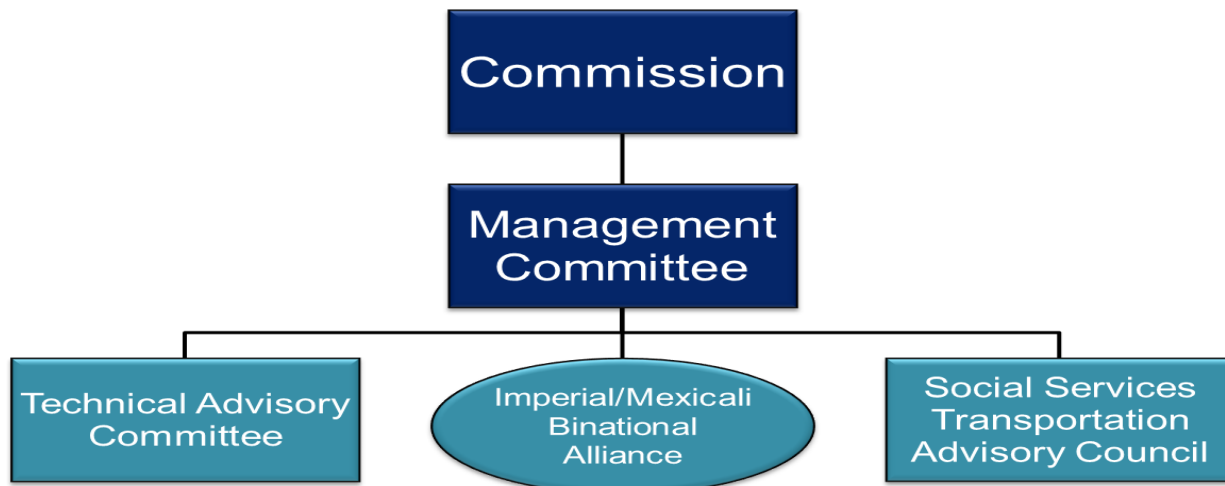
Social Services Transportation Advisory Council (SSTAC) The SSTAC is statutorily (PUC 99238) created to serve a broad representation of youth, students, elderly, disabled persons, persons of limited means, social service agencies, the transit dependent, and transit providers. The three tenets of the Council are to participate in the identification of transit needs; review and recommend action; and, provide advice and technical recommendations.

Technical Advisory Committee (TAC) The TAC is composed of Planning and Public Works Department representatives from each member agency including advisory members of Caltrans, SCAG and ICTC. The purpose of the TAC is to coordinate the plans and development of regional transportation improvement program of projects, transportation planning programs, and transportation funding programs.

Imperial/Mexicali Binational Alliance ICTC is the co-lead to implement in partnership with the Imperial Valley Economic Development Corporation (IVEDC) and Mexicali's Economic Development Organization (CDEM) have developed the "Imperial-Mexicali Binational Alliance." The Imperial—Mexicali Binational Alliance has been established via memorandum of understanding on September 12, 2013 in the City of Mexicali.

The goals for this group are focused on three cross-border goals: transportation infrastructure, economic development and environment issues. ICTC has a primary focus on trying to finance and implement short-term low cost improvements and to have consensus of priorities for improvements. Other participating organizations include local, state and federal agencies that have direct responsibilities for cross border infrastructure, economic and environmental issues. The Alliance meets bimonthly on the 2nd Thursday of the month and rotates locations between Imperial and Mexicali.

ICTC’s COMMITTEE STRUCTURE





IMPERIAL COUNTY TRANSPORTATION COMMISSION

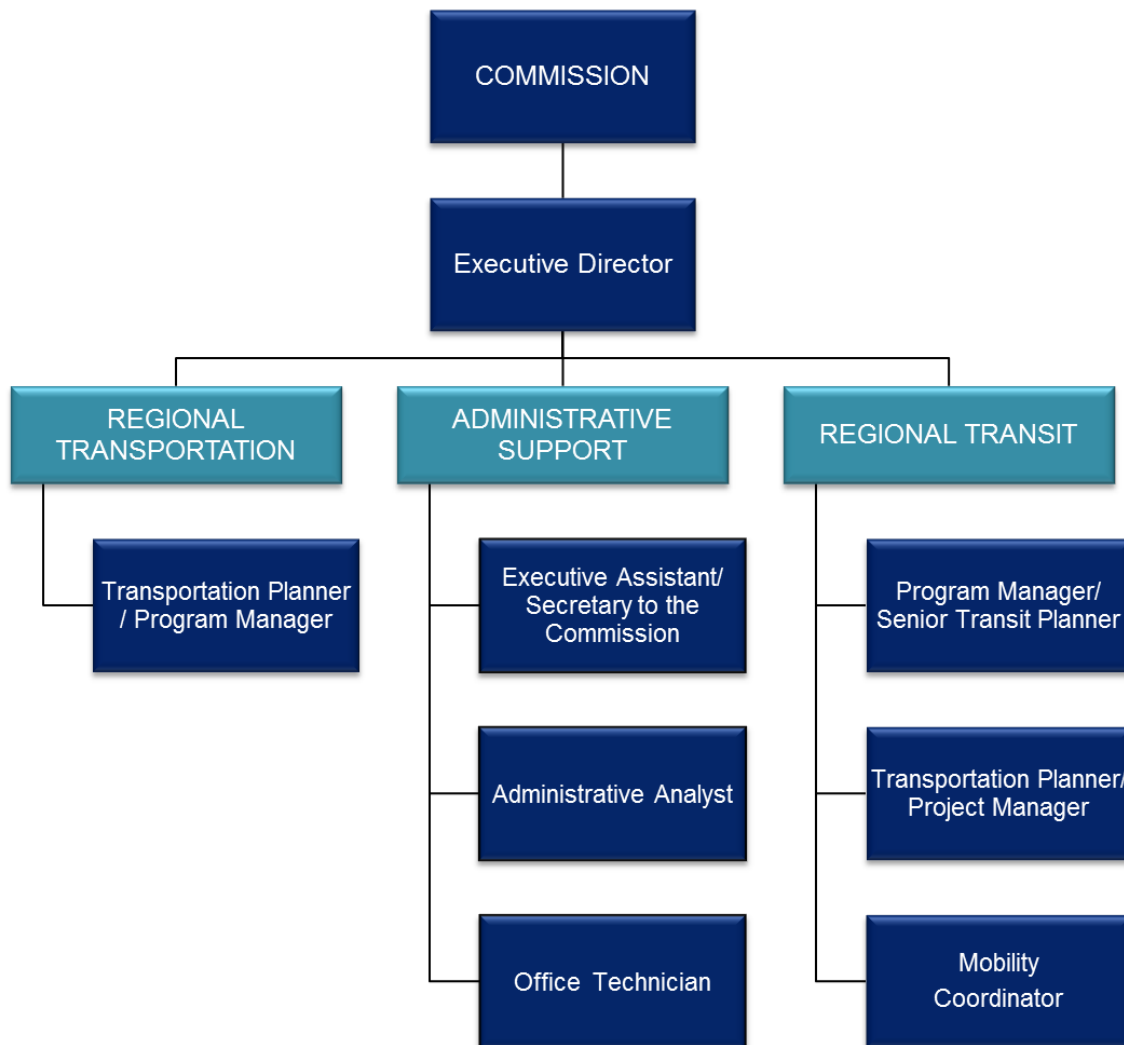
FY 2015/2016 OVERALL WORK PLAN AND BUDGET

ORGANIZATIONAL STRUCTURE (Continued)

ICTC STAFF

The Imperial County Transportation Commission's greatest asset is its employees. As recognized in this budget the ICTC staff serves the community through a variety of regional programs and services.

The FY 2016-2017 budget proposes staffing of eight full-time positions to manage the programs and services described in this budget. The full-time positions includes one Office Technician, one Secretary/Clerk to Commission, one Administrative Analyst, one Mobility Coordinator (responsible for: outreach for the IVT ACCESS and IVT RIDE services and administration of the certification and eligibility process for senior citizens and persons with disabilities as defined under the Americans with Disabilities Act (ADA), three transportation planner positions from entry-level to senior-level in classifications (responsible for: Regional Transportation Planning; Regional Transit Planning; and, Transit Service Administration), and the Executive Director.





IMPERIAL COUNTY TRANSPORTATION COMMISSION

FY 2016/2017 OVERALL WORK PLAN AND BUDGET

COMMUNITY OVERVIEW AND INTRODUCTION

THE COMMUNITY WE SERVE

Originally part of San Diego County, the Imperial County or synonymously referred to as the “Imperial Valley” is a growing metropolitan community within a large agricultural area along California's border region. Imperial County expands for 4,597 square miles. The California Department of Finance’s January 2016 Population estimate indicates the County has a population of 185,831. Surrounded by San Diego and Riverside Counties in California, the State of Arizona, and the Municipality of Mexicali in the State of Baja California, Mexico. The Imperial Valley is rich in natural beauty, and a local history and economy based on agriculture, and the cross-border family and trade relationships with our neighbors in Mexico. In 2014, there were an estimated 40,000 people that crossed daily into the U.S. from Mexico through the U.S. Customs and Border Protection Agency’s two busiest land ports of entry between Imperial County and Mexicali, Mexico at Calexico West/Mexicali I, and Calexico East/Mexicali II (by cars and as pedestrians).

INTRODUCTION

The Imperial County Transportation Commission (ICTC) uses a modified accrual basis accounting for its governmental funds. The Overall Work Plan and Budget is developed by ICTC staff and Executive Director. This process begins with a review of the projected revenues from each source of federal, state and local funds together with a review of current and future projects and programs. The Commission provides policy guidance and sets priorities. This process includes active participation by the technical advisory committees and the recommendations provided by ICTC staff, the Executive Director, the ICTC Management Committee, and Commission.

The Fiscal Year 2016-2017 Overall Work Plan and Budget demonstrates a comprehensive agency-wide budget that conveys the work to be performed by the Commission. The budget is divided into three sections: the Budget Summary and the core programs of Regional Transportation Planning and Programming, and, Transit Planning and Program Management. The Main Budget contains the program overviews, and revenue and expense projections and is intended to provide a general understanding of ICTC’s budgeted activities and programs for the coming fiscal year. Within each of the other program sections, the work elements and services are also described.

After the budget is adopted, staff has the on-going responsibility to monitor actual revenues and expenditures of the budget. A budget report comparing actual revenues and expenditures to budgeted amounts will be prepared mid-year and presented to the Commission.

When it becomes necessary to modify the adopted budget, the amendment procedure will depend on the type of change that is needed. It is proposed that administrative changes that do not result in an increase in the overall program budget, but require line item transfers of costs and revenues within a work program budget will only require approval of the Executive Director. Amendments that result in an increase to the total expenditures for a program would require Commission approval. These items would be brought to the Commission in a formal agenda item.



IMPERIAL COUNTY TRANSPORTATION COMMISSION

FY 2016/2017 OVERALL WORK PLAN AND BUDGET

REVENUES AND FUNDING SOURCES

An essential role of ICTC is to allocate Federal, State and Local funds to transportation projects within the county. Although many of these funds do not flow through the ICTC budget, the agency is the authority that allocates and administers millions of dollars in state and federal transportation funds. Because of the significance of this responsibility, it is important to discuss this role of the agency.

As projects are prioritized in the region in accordance with policy guidelines, ICTC allocates State and Federal funds and designates a lead agency to administer the implementation of these projects. Once the Commission makes an allocation and a project is programmed in the long-range Regional Transportation Plan (RTP) and the short-range Regional Transportation Improvement Program (RTIP), the lead agency is responsible for applying for funds through ICTC, to the State or Federal agencies as appropriate. These funds are then placed in the lead agency's local budget. If ICTC is designated as the lead or co-lead agency, these funds will appear in its budget. These funds include but are not limited to, Federal Transit Administration (FTA), Federal Regional Surface Transportation Program (RSTP), Federal Congestion Mitigation and Air Quality (CMAQ), Congressional Appropriations, State Transportation Improvement Program (STIP), and the States Proposition 1B funds.

The revenues budgeted for ICTC in FY 2016/2017 are estimated to \$15,663,895 and include both new revenues and funds carried-over from the previous fiscal year. As shown in the *FY 2016/2017 Overall Work Plan and Budget Summary*, the sub-total of the revenues are split by federal, state and local sources (Federal revenues total \$4,371,078; State revenues total, \$8,816,020; and, Local revenues total \$2,476,797).

The following are summary descriptions of the revenues and fund sources.

FEDERAL REVENUES AND FUND SOURCES

Federal Transportation Administration (FTA) Section 5307 Urban grant funds received in arrears ICTC totaling \$2.27 million are programmed to be utilized for the IVT, IVT Access and IVT- Blue and Green Line transit systems. Actual apportionments for this fund are typically not available until October of each year. The FY 2016-17 budget estimates are based on apportionments from prior years.

Federal Transportation Administration (FTA) Section 5309 Federal earmark funds are budgeted for the construction phase of bus transfer terminal in Imperial in the amount of \$747,000.

Federal Transportation Administration (FTA) Section 5311 Rural funds received in arrears totaling \$1.2 Million are programmed to be utilized for the IVT fixed route transit system in the rural area; IVT Gold Line; and Brawley Bus Stop Improvement Program, Phase 1 and 2. Actual apportionments for this fund are typically not available until October of each year. The numbers for FY 2016-2017 are estimates based on apportionments from prior years.



IMPERIAL COUNTY TRANSPORTATION COMMISSION

FY 2015/2016 OVERALL WORK PLAN AND BUDGET

STATE REVENUES AND FUND SOURCES

State Transportation Improvement Program Planning and Program Management (STIP-PPM) Funds have been utilized for expenses associated with planning and programming activities. The California Transportation Commission approved the use of these funds annual since May 2010 based on the region's request. The funds available in FY 2016-2017 are \$300,000.

State Transit Assistance (STA) Funds received quarterly are restricted to transit expenses only and are estimated at \$1.16 million.

Local Transportation Funds (LTF) Funds received monthly from the State Controllers offices based on the retail sales tax collected locally totaling near \$7 million for transit purposes.

Funds in excess of transit services, if any, are then available for bus stop maintenance and improvements, and bicycle and pedestrian projects, etc. Available revenue received in the prior year, in excess of the previous year's budgeted amount is reprogrammed as "Revenue Stabilization" or "Operating Reserve".

Public Transportation Modernization Improvement and Service Enhancement Account (PTMISEA) Funds are expected to be received annually, under the Bond Act Prop 1b approved by voters in November 2006. Grant funds are programmed for transit vehicles for a total sum of \$186,250.

California Security and Transit Grant Program (CSTGP) Funds will be utilized for solar lighting facilities at the Imperial Transfer terminal. Grant funds for a total sum of \$133,338 are also budgeted for the installation of security cameras on IVT and IVT ACCESS buses.

State Planning, and Research (SP&R) Funds are eligible for planning purposes only. During FY 2016-2017 ICTC will partner with Caltrans and the San Diego Association of Governments (SANDAG) to initiate a new border-wide study, for the California/Baja California Ports of Entry: An Update to Economic Impacts of Delay and Greenhouse Gas (GHG) Impacts of Delay. SANDAG will serve as the lead agency for this project.

LOCAL REVENUES AND FUND SOURCES

Fare Revenue funds to be received from passengers or affiliated agencies on their behalf, as a portion of a cost of the passenger's trip.

On-Hand funds are programmed when there is a balance on account typically as a result of a cost savings, a delay in a project start date or unanticipated revenues from the prior year.

Local Transportation Authority (LTA 2%) these funds are listed due to language in the new LTA ordinance allowing for the use of 2% of the funding for transit services. The Authority took action on May 26th 2010, authorizing the use of these funds for local transit services for seniors.

SCAG/Member Agency Contributions Member agency contributions are based upon a formula adopted by the Commission on May 26th, 2010, see Appendix A on page 37. SCAG contributions include shared costs for the Office Assistant / Receptionist position.



IMPERIAL COUNTY TRANSPORTATION COMMISSION

FY 2016/2017 OVERALL WORK PLAN AND BUDGET

EXPENDITURES

EXPENSES

Expenses in this report are summarized under the following categories:

Regional Transit Services Public transit serving multiple jurisdictions and multiple population groups

Local Transit Services Public transit serving individual jurisdictions and single population groups

Transit Capital Projects Projects with design and/or capital expenditures for fixed facilities and vehicles

ICTC Administration and Planning These expenses are separated into three sub-elements: Transit Administration, Transit Planning and Program Management; and, Transportation Planning (Regional Planning activities).

Operating Reserve An operating reserve is established to provide revenue stabilization.

Bikes and Peds Article 3 (Bicycle and Pedestrian Projects) An expense for 3% of the available LTF revenue has been listed. A call for local agency projects is scheduled on an annual basis and is scheduled in September for FY 2016/2017.

Table 1 on page 17 provides a summary of the FY 2016/2017 Budgets Fund Sources and Expenditures.

TABLE 1

IMPERIAL COUNTY TRANSPORTATION COMMISSION FUNDING SOURCES								
					Budget	Estimated Actual	Budget	
					FY 2015-16	FY 2015-16	FY 2016-17	%
1	2	3	4	5	6	7	8	9
REVENUES								
<u>FEDERAL</u>								
A	FTA SEC 5307 (Urban)				\$2,276,290	\$2,276,290	\$2,276,290	0.0%
B	FTA SEC 5309 - Imperial Transfer Terminal				\$747,000	\$0	\$747,000	0.0%
C	FTA SEC 5310 Regional Mobility Management				\$144,000	\$14,790	\$129,210	-10.3%
D	FTA SEC 5311 (Rural) - Rural Transit Services				\$1,218,578	\$261,436	\$1,218,578	0.0%
E	SUBTOTAL				\$4,385,868	\$2,552,516	\$4,371,078	-0.3%
<u>STATE</u>								
F	TDA - LOCAL TRANSPORTATION FUND (LTF)				\$8,848,062	\$6,151,173	\$7,027,401	-20.6%
G	TDA - STATE TRANSIT ASSISTANCE (STA)				\$904,208	\$904,208	\$1,169,031	29.3%
H	STIP- PLANNING, PROGRAMMING & MONITORING (PPM)				\$19,000	\$19,000	\$300,000	1478.9%
I	STATE PLANNING and RESEARCH (SP &R)				\$175,000	\$174,947	\$0	-100.0%
J	PROP 1B - PTMISEA				\$4,363,659	\$4,184,766	\$186,250	-95.7%
K	PROP 1B - CTSGP				\$378,125	\$81,428	\$133,338	-64.7%
L	SUBTOTAL				\$14,688,054	\$11,515,522	\$8,816,020	-40.0%
<u>LOCAL</u>								
M	FARE REVENUE				\$1,060,174	\$873,559	\$1,033,157	-2.5%
N	ON HAND				\$150,000	\$150,800	\$157,900	5.3%
O	LOCAL TRANSPORTATION AUTHORITY (LTA) 2% transit set a side				\$300,000	\$300,000	\$350,000	16.7%
P	LOCAL TRANSPORTATION AUTHORITY (LTA) 5% set a side				\$708,240	\$0	\$803,240	13.4%
Q	SCAG/MEMBER AGENCY CONTRIBUTIONS				\$350,000	\$130,000	\$132,500	-62.1%
R	SUBTOTAL				\$2,568,414	\$1,454,359	\$2,476,797	-3.6%
S	TOTAL				\$21,642,336	\$15,522,397	\$15,663,895	-27.6%
EXPENDITURES								
T	REGIONAL TRANSIT				\$6,993,580	\$5,113,656	\$6,794,880	-2.8%
U	LOCAL TRANSIT				\$1,552,207	\$1,195,627	\$1,820,131	17.3%
V	TRANSIT CAPITAL (Vehicle Prcmt & Transit Facility Construction)				\$8,334,316	\$4,957,278	\$3,425,066	-58.9%
W	TRANSIT CAPITAL Miscellaneous				\$413,125	\$81,428	\$168,338	-59.3%
X	TRANSIT OPS maintenance				\$219,500	\$194,500	\$220,000	0.2%
Y	ADMINISTRATION AND PLANNING				\$1,657,144	\$1,507,144	\$2,111,480	27.4%
Z	TRANSIT CAPITAL FLEET RESERVE				\$1,814,360	\$1,814,360	\$900,000	-50.4%
AA	REVENUE STABILIZATION/ OPERATING RESERVES				\$478,404	\$478,404	\$35,000	-92.7%
BB	BIKES AND PEDS Art 3				\$180,000	\$180,000	\$189,000	5.0%
CC	TOTAL				\$21,642,636	\$15,522,397	\$15,663,895	-27.6%

TABLE 2

IMPERIAL COUNTY TRANSPORTATION COMMISSION FY 2016-17 OVERALL WORK PROGRAM AND TRANSIT PROGRAMS FINANCE PLAN													
1	2	3	4	5	6	7	8	9	10	11	12	13	
Projected Revenues								STATE			SUBTOTAL	TOTAL	
A	FEDERAL												
B	FTA Sec 5307 Urban	2016-17	\$2,276,290	\$2,276,290				STA	2015-16	\$300,000	\$300,000		
C	FTA 5308 Capital	2011-12	\$747,000	\$747,000					2016-17	\$869,031	\$1,169,031		
D	FTA 5310 MIP	2014-15	\$129,210	\$129,210					2016-17	\$300,000	\$300,000		
E	FTA 5311 Rural	2013-14/2014-15	\$957,142					STIP - PPM	2015-16	\$727,401			
F		2016-17	\$261,436	\$1,218,578	\$4,371,078			LTF SB325	2016-17	\$6,300,000	\$7,027,401		
G								PTMSEA	2009-10	\$186,250	\$186,250		
H								CTSGP	2012-13	\$193,938	\$193,938		
I	LOCAL												
J	Fare Revenue	2016-17	\$1,083,157	\$1,083,157									
K	On Hand	2014-15	\$197,900	\$197,900									
L	LTA 2% and 5%	2016-17	\$1,153,240	\$1,153,240									
M	SCAG/member contrib	2016-17	\$132,500	\$132,500	\$2,476,797							\$8,816,020	
N	Total											\$15,663,895	
Projected Expenditures													
	Service	Cost	Estimated Fares	On Hand balance	STIP PPM	2% and 5% LTA Transit	SCAG / member contributions	Prop 1B CTSGP & PTMSEA	FTA Sec 5309, 5310 & 5311	FTA Sec 5307	#7079 STA AB 2851	#7076 LTF SB325	Total Subsidy
O	Regional Transit Services												
	Total \$	6,794,880	\$66,144	\$-	\$-	\$-	\$-		261,436	2,276,290	1,169,031	2,231,979	6,794,880
P	Local Transit Services												
	Total \$	1,620,131	\$177,014	\$-	\$-	\$360,000	\$-						1,643,117
Q	Transit Vehicle Purchase												
	Total \$	522,000	\$-	\$-	\$-	\$-	\$-						522,000
R	Transit Project Construction												
	Total \$	2,903,066	\$-	\$-	\$-	803,240	\$-	1,704,142					2,903,066
S	Transit Facility Maintenance												
	Total \$	220,000	\$-	\$-	\$-	\$-	\$-						220,000
T	Transit Miscellaneous Improvements												
	Total \$	168,338	\$-	\$-	\$-	\$-	133,338						168,338
U	ICTC Transit Admin Operations												
	Total \$	937,080	\$-	\$-	\$-	15,000	\$-	129,210					992,080
V	ICTC Transit Plane Programs												
	Total \$	485,000	\$-	\$150,000	\$-	\$-	\$-						485,000
W	ICTC Regional Planning												
	Total \$	689,400	\$-	\$7,900	\$300,000	\$-	\$117,500						806,900
Y	ICTC Transit Fleet - Capital Reserve												
	Total \$	2,111,480	\$-	\$157,900	\$300,000	\$-	\$32,500		129,210				3,143,980
Z	Revenue Stabilization/Operating Reserve												
	Total \$	900,000	\$-	\$-	\$-	\$-	\$-						900,000
AA	Bikes and Peds Art3												
	Total \$	35,000	\$-	\$-	\$-	\$-	\$-						35,000
BB													
	Total \$	189,000	\$-	\$-	\$-	\$-	\$-						189,000
CC	Total												
	Total \$	15,663,895	\$1,033,157	\$157,900	\$300,000	\$1,153,240	\$132,500	\$319,588	\$2,094,788	\$2,276,290	\$1,169,031	\$7,027,401	\$15,663,895



FINANCIAL MANAGEMENT AND COMMUNITY OUTREACH & REGIONAL TRANSPORTATION PLANNING AND PROGRAM MANAGEMENT

FINANCIAL MANAGEMENT AND COMMUNITY OUTREACH

In FY 2013/2014, ICTC initiated a partnership with Western Riverside Council of Governments (WRCOG) regarding participation in the California HERO Program. In FY 2015/2016, ICTC will move forward with this partnership. ICTC will serve as the main point of contact for the Imperial County sub-region and will coordinate with participating member agencies to assist WRCOG, as needed, for efficient coordination of the California HERO Program.

ICTC will continue its efforts to pursue non-transportation programs in FY 2016/2017.

REGIONAL TRANSPORTATION PLANNING

In Fiscal Year 2016/2017, ICTC will begin effort to complete an update to the Imperial Valley Long Range Transportation Plan.

ICTC will continue efforts with SCAG and Caltrans District 11 to update the Imperial County Transportation Model. This regional transportation model is a critical planning tool for evaluating and prioritizing major transportation improvements in the County. Staff will also work to identify funding opportunities to pursue critical planning studies necessary for the Forrester Road Corridor from I-8 to SR-78/86.

REGIONAL TRANSPORTATION PROGRAMMING

For Regional Transportation Programming, the ICTC efforts for Fiscal Year 2016/2017 will be focused on the Capital Projects Program and the Transportation Improvement Program.

Capital Projects The Capital Projects program include ICTC efforts to provide oversight, planning, project management and monitoring for on-going roadway, highway, and ports of entry improvement projects. The key regional projects include, the City of Imperial's Transit Center; the I-8/Dogwood Road Bridge Widening; I-8/Imperial Avenue Interchange, State Route 98 Widening (West of SR-111)/Cesar Chavez Blvd. Improvements; proposed widening of existing Forrester Road Corridor; Phase 1 construction and expansion of the Calexico West Port of Entry; the Proposed Toll Pilot Project and Expansion of the Calexico East Port of Entry; and, other transit, pedestrian, and bicycle capital improvements referenced in the following sections.

Transportation Improvement Program (TIP) The Transportation Improvement Program activity encompasses development and amendments to the State and Federal Transportation Improvement Programs (TIPs), including projects that may receive awards we anticipate submitting projects previously identified for programming once the proposed funds are approved by the federal government. Staff will continue to work closely with local agencies, SCAG staff and Caltrans staff to ensure the timely utilization of the following programmed funds: Regional Surface Transportation Program (RSTP), Congestion Management Air Quality (CMAQ), and Active Transportation Program (ATP).

Local Transportation Authority (LTA) On March 24th, 2010, the ICTC Commission approved the LTA's request to accept the responsibilities of administration and oversight of the LTA program of Measure D sales tax transportation funds. Previously, these responsibilities were managed by the County of Imperial's Public Works Department. Following the March 24th approval, County and ICTC staff were directed to initiate all necessary steps toward implementing this transfer of responsibilities to be effective July 1st, 2010. These responsibilities include but are not limited to providing staff support to the LTA Board, and administration of the LTA funds.



REGIONAL TRANSPORTATION PLANNING AND PROGRAM MANAGEMENT

FY 2016/2017 OVERALL WORK PLAN AND BUDGET

In March, 2012 the LTA approved and adopted the LTA Bond Financing effort. Participating Agencies included the Cities of Brawley, Calexico, Calipatria, Imperial and the County of Imperial. See table below for status bond project completions though June 2016. In FY 2016/2017 staff will administer the member agency's distributions, bond payments, and the contract services for annual audit. Staff will also be assisting with the FY 2015/2016 financial reports prepared by an independent CPA.

Imperial-Mexicali Binational Alliance ICTC is the co-lead to implement in partnership with the Imperial Valley Economic Development Corporation (IVEDC) and Mexicali's Economic Development Organization (CDEM) have developed the "Imperial-Mexicali Binational Alliance." The Imperial-Mexicali Binational Alliance has been established via memorandum of understanding on September 12, 2013 in the City of Mexicali.

The goals for this group are focused on three cross-border goals: transportation infrastructure, economic development and environment issues. ICTC has a primary focus on trying to finance and implement short-term low cost improvements and to have consensus of priorities for improvements. Other participating organizations include local, state and federal agencies that have direct responsibilities for cross border infrastructure, economic and environmental issues.

The Imperial-Mexicali Binational Alliance is scheduled to meet bi-monthly on the 2nd Thursday of the month and rotates meeting location between Imperial and Mexicali.

ICTC is the designated administrator of the Measure D half-cent transportation sales tax program. Below is a summary of the LTA Revenues from the last three years that includes distributions to each of the cities and the County of Imperial, as well as, the set-asides for Regional Highways (5%), Regional Transit (2%) and Administration (1%).

LTA Revenues per City and County

	FY 2013-14	FY 2014-15	FY 2015-16
Brawley	\$2,207,383.90	\$1,809,047.13	\$1,697,800.52
Calexico	\$3,337,274.39	\$2,751,932.08	\$2,552,876.05
Calipatria	\$455,291.09	\$395,699.35	\$368,882.38
EI Centro	\$3,607,597.43	\$2,814,925.42	\$2,754,208.63
Holtville	\$645,064.65	\$521,186.90	\$513,371.35
Imperial	\$1,456,872.98	\$1,242,175.04	\$1,188,087.76
Westmorland	\$336,130.70	\$281,217.13	\$278,160.24
County of Imperial	\$5,496,792.26	\$4,486,341.48	\$4,193,312.94
LTA 1% Administration	\$190,678.34	\$149,869.53	\$147,246.75
LTA 2% Transit	\$381,356.68	\$299,739.05	\$294,493.49
LTA 5% State Highway	\$953,391.72	\$749,347.64	\$736,233.68
	\$19,067,834.14	\$15,501,480.75	\$14,724,673.79

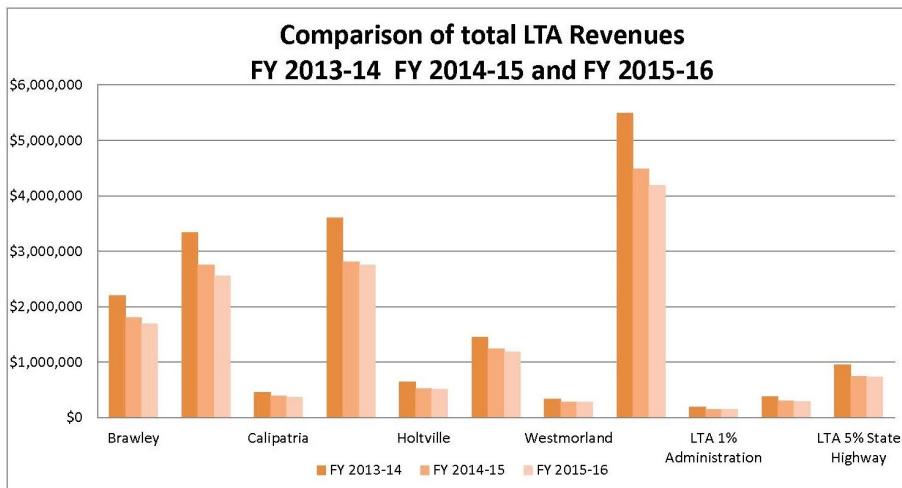


TABLE 3

IMPERIAL COUNTY TRANSPORTATION COMMISSION FY 2016-17						
ICTC REGIONAL PLANNING AND PROGRAM MANAGEMENT 7417001						
1	2	3	4	5	6	7
REVENUES						
A	430000	On hand balance/interest revenue			\$	7,900
B	446010	State Aid Other - TDA			\$	264,000
C	446445	State - STIP-PPM			\$	300,000
D	493000	Local - Member Agency Contributions, SCAG Reimbursements and Reimbursement for Services Provided			\$	117,500
E Total Revenues					\$	689,400
EXPENDITURES						
<u>Administration and Operations</u>						
F	501000/525010	Administrative staffing and Support (1 fulltime and 5 haltime)			\$	266,700
G		- TAC Subcommittee Administration				
H		- Contract admin: grants, reporting and oversight				
I		- ICTC Management Committee/Commission Admin				
J		- RTIP/ STIP and project coordination				
K		- Interagency consultation, legislative affairs				
L	517055	Insurance - liability			\$	15,000
M	522000	Memberships, office exp, communications, IT, fuel and maint			\$	24,000
N	526000	Legal notices, interpretive services			\$	500
O	528000	Rents, leases and utilities			\$	21,000
P	530005	Regional Plans/Project Coordination, Webinars			\$	6,000
Q	531040	Training/Travel Expense			\$	22,000
R	549000	Equipment			\$	5,000
S Administration and Operations Subtotal					\$	360,200
<u>Professional and Specialized Projects and Services</u>						
T	525010	Website Consultation (www.imperialctc.org)			\$	3,000
U	525010	Payroll Vendor fees			\$	6,700
V	525010	Legal Consultation			\$	7,500
W	525065	County GSA accounting			\$	500
X	525010	HR Consultant Services 50%			\$	10,000
Y	525090	CPA/auditors (external)			\$	7,500
Z					\$	35,200
AA	525010	STIP / RTIP Consultant			\$	30,000
BB	525010	Calexico ITC Phase 1 (PE)			\$	64,000
CC	525010	Long Range Transportation Plan			\$	200,000
DD					\$	294,000
EE Total Projects, Services, Plans and Programs					\$	329,200
FF Total Expenditures					\$	689,400
					FY 2016-17	689,400

This page is intentionally left blank.



ICTC Transit Planning and Program Management FY 2016/2017

OVERVIEW

The Transit Planning and Program Management work element provides the policy guidance for the allocation of transit resources. In the development of this work element, staff receives input from three primary sources; the general public through the mandated annual Unmet Transit Needs Public Hearing process, a comprehensive review of revenue sources and an analysis of existing services and their performance measures.

Approximately one hundred additional persons are employed indirectly through contracts with transit operators, vendors and consultants in support of these programs and services. Funding is also spent locally when and where possible for additional services which may include; fuel, tires, uniforms, heavy duty mechanical, internet, printing and marketing services.

The immediate future holds many opportunities, as well as, challenges. The state and federal budget climate remains uncertain. The effort is designed to develop a broad based consensus reflecting the values, needs and preferred solutions for as many transit passengers as possible. The challenges of providing public transit continue. The Imperial Valley represents a true crossroads of people, history, time and place. Each is unique but all share the same goal of a better quality of life.

Striking a balance between public need and available funding is at the center of any public transit project or program. The various revenue sources and administrative requirements can be complicated and challenging to understand. Tables 4 to 6 provide an overview of the revenue and expenditure plan for FY 2016/2017, along with the descriptions of the transit planning services and projects.

THE PREVIOUS YEARS

Staff has been empowered to turn innovative concepts into plans, and plans into projects and services. The most notable of past accomplishments include:

Intracity Circulators ICTC identified a need in early 2000 to provide increased access to public services within the cities starting with the City of El Centro. The designs for an IVT Blue and Green lines were approved in 2005. Service began on the IVT Blue Line in October 2006. The service was reconfigured for 2009/10 and the IVT Green line began to operate July 2009. The IVT Gold Line in the City of Brawley was implemented in January 2014. A Garnet Line in Calexico and a Red Line in Imperial will be underway when funding becomes available. The Circulator Lines provide continuing travel for passengers transferring from the main fixed route *Imperial Valley Transit* bus routes within the Cities.

Reduction of Headways ICTC directed the reduction of headways (the wait times for the next approaching bus) from two hours to seventy minutes effective in July 2006. Headway reduction to 35 minutes during peak service hours on heavily traveled routes between Calexico and El Centro were implemented in October 2013. Headway reduction on additional routes continues to be a goal as funding permits.

Alternative Fuels and Fleet Replacements The California Air Resources Board required the region to convert the IMPERIAL VALLEY TRANSIT fleet to a clean fuel. After a consultant prepared analysis and significant discussion, a policy decision was made in October 2004 incorporating ultra low sulfur diesel into operations. In 2012, a new fleet of ten clean diesel Gilligs were introduced and six additional clean diesel Gilligs arrived in July 2015. Additional fleet replacement continues as funding permits. The vehicle replacements are ICTC's effort to gradually take ownership of its entire transit fleet.

Transit Mission Statement:

The mission of the Imperial County Transportation Commission (ICTC) public transit systems is to improve the quality of life for the residents of the Imperial Valley through a coordinated, accessible, affordable and efficient countywide transit system.

Transit Vision Statement:

The transit network provides a safe, affordable and reliable transit system that meets the needs of the transit dependent in communities within the Imperial Valley, by providing access to health care, education, public services, employment, commercial and recreational activities.

Source:

Imperial County Transportation Commission Short Range Transit Plan, January 2012

TABLE 4

IMPERIAL COUNTY TRANSPORTATION COMMISSION FY 2016-17									
Consolidated Administration, Operations and Planning					TRANSIT	PLANNING	TOTAL		
1	2	3	4	5	6	7	8	9	10
REVENUES									
	7076/7416								
A	430000	On hand balance/interest revenue			\$ 150,000	\$ 7,900	\$ 157,900		
B	446010	State Aid Other - TDA (LTF)			\$ 1,127,870	\$ 264,000	\$ 1,391,870		
C	446445	State - STIP-PPM			\$ -	\$ 300,000	\$ 300,000		
C	446445	FTA 5310 Mobility Coordination Program			\$ 129,210	\$ -	\$ 129,210		
D	493000	Local - Member Agency Contributions, SCAG Reimbursements and Reimbursement for Services Provided			\$ 15,000	\$ 117,500	\$ 132,500		
E Total Revenues					\$ 1,422,080	\$ 689,400	\$ 2,111,480		
EXPENDITURES									
Administration and Operations									
F	501000/ 525010	Administrative Staffing and Support (seven fulltime and one shared w SCAG)			\$ 515,180	\$ 266,700	\$ 781,880		
G	517055	Insurance - Liability			\$ 100,000	\$ 15,000	\$ 115,000		
H	522000	Memberships, office exp, communications, IT, fuel and maint			\$ 33,800	\$ 24,000	\$ 57,800		
I	526000	Legal notices, interpretive services			\$ 4,000	\$ 500	\$ 4,500		
J	528000	Rents, leases and utilities			\$ 35,900	\$ 21,000	\$ 56,900		
K	530005	Regional Plans/Project Coordination, Webinars			\$ 4,500	\$ 6,000	\$ 10,500		
L	531040	Training/Travel Expense			\$ 25,000	\$ 22,000	\$ 47,000		
M	549000	Equipment			\$ 6,000	\$ 5,000	\$ 11,000		
N Administration and Operations Subtotal					\$ 724,380	\$ 360,200	\$ 1,084,580		
Professional and Specialized Projects and Services									
O	525010	Legal Consultation			\$ 10,000	\$ 7,500	\$ 17,500		
P	525010	Payroll Vendor Fees			\$ 6,700	\$ 6,700	\$ 13,400		
Q	525065	County GSA accounting			\$ 1,000	\$ 500	\$ 1,500		
R	525010	HR consultant services			\$ 10,000	\$ 10,000	\$ 20,000		
S	525090	CPA/auditors (external)			\$ 150,000	\$ 7,500	\$ 157,500		
T	525030	PM, Engineering Review and Support			\$ 20,000	\$ -	\$ 20,000		
U	525010	Transit Operator Drug and Alcohol Audits			\$ 12,000	\$ -	\$ 12,000		
V		Subtotal			\$ 209,700	\$ 32,200	\$ 241,900		
W	525010	Bus Stop Inventory and Information Program (Phase III)			\$ 150,000	\$ -	\$ 150,000		
X	525010	TDA Triennial Performance Audit			\$ 85,000	\$ -	\$ 85,000		
Y	525010	Passenger Statistical Summary (IVT)			\$ 100,000	\$ -	\$ 100,000		
Z	525010	Update to the Short Range Transit Plan (SRTP)			\$ 150,000	\$ -	\$ 150,000		
AA	525010	Website Consultant (www.imperialctc.org)			\$ 3,000	\$ 3,000	\$ 6,000		
BB	525010	STIP / RTIP Consultant			\$ -	\$ 30,000	\$ 30,000		
CC	525010	Calexico ITC Phase 1 (Preliminary Engineering)			\$ -	\$ 64,000	\$ 64,000		
DD	525010	Long Range Transportation Plan			\$ -	\$ 200,000	\$ 200,000		
EE		Subtotal			\$ 488,000	\$ 297,000	\$ 785,000		
FF Total Professional and Specialized Projects and Services					\$ 697,700	\$ 329,200	\$ 1,026,900		
GG Total Expenditures					\$ 1,422,080	\$ 689,400	\$ 2,111,480		

TABLE 5

IMPERIAL COUNTY TRANSPORTATION COMMISSION FY 2016-17 OVERALL WORK PROGRAM AND TRANSIT PROGRAMS FINANCE PLAN													
Projected Revenues													
1	2	3	4	5	6	7	8	9	10	11	12	13	
A	FEDERAL			SUBTOTAL	TOTAL		STATE				SUBTOTAL	TOTAL	
B	FTA Sec 5307 Urban			\$2,276,290			STA		2015-16	\$300,000			
C	FTA 5309 Capital	\$747,000		\$747,000					2016-17	\$889,031		\$1,169,031	
D	FTA 5310 MNP	\$129,210		\$129,210			STIP - PPM		2016-17	\$300,000		\$300,000	
E	FTA 5311 Rural	\$957,142		\$957,142			LTF SB325		2015-16	\$727,401		\$727,401	
F		\$261,436		\$261,436	\$4,371,078				2016-17	\$6,300,000		\$6,300,000	
G							PTMISEA		2009-10	\$186,250		\$186,250	
H							CTSGP		2012-13	\$133,338		\$133,338	
I	LOCAL												
J	Fare revenue	\$1,093,157	\$1,093,157	\$1,093,157									
K	On Hand	\$157,900	\$157,900	\$157,900									
L	On Hand	\$157,900	\$157,900	\$157,900									
M	LTA 2% and 5%	\$1,153,240	\$1,153,240	\$1,153,240									
N	SCA member contrib	\$132,500	\$132,500	\$132,500	\$2,476,797							\$8,816,020	
N	Total											\$15,663,895	
Projected Expenditures													
O	Service	Cost	Estimated Fares	On Hand balance	STIP PPM	2% and 5% LTA Transit	SCAG / member contributions	Prop 1B CTSGP & PTMISEA	FTA Sec 5307 & 5311	FTA Sec 5307	#7079 STA AB 2551	#7076 LTF SB325	Total Subsidy
O	Regional Transit Services												
	Local Transit Services	6,794,880	856,144						261,436	2,276,290	1,169,031		2,231,979
P	Transit vehicle Purchase	1,620,131	177,014			850,000							1,963,117
Q	Transit Project Construction	522,000											522,000
R	Transit Facility Maintenance	2,903,066				803,240		186,250	1,704,142				2,09,494
S	Transit Miscellaneous Improvements	220,000											220,000
T	ICTC Transit Admin Operations	168,338						168,338					168,338
U	ICTC Transit Plans/Programs	937,080					15,000		129,210				792,870
V	ICTC Regional Planning	485,000											485,000
W	ICTC Transit Fleet - Capital Reserve	689,400											689,400
Y	Revenue Stabilization/ Operating Reserve	2,111,460											2,111,460
Z	Bikes and Peds Art3	900,000											900,000
AA		35,000											35,000
BB		189,000											189,000
CC	Total	\$15,663,895	\$1,033,157	\$157,900	\$300,000	\$1,153,240	\$132,500	\$319,588	\$2,094,788	\$2,276,290	\$1,169,031	\$7,027,401	\$15,663,895

TABLE 6

IMPERIAL COUNTY TRANSPORTATION COMMISSION FY 2016-17						
ICTC TRANSIT PLANNING AND PROGRAM MANAGEMENT 7416001						
1	2	3	4	5	6	7
REVENUES						
A	7076/7416	On hand balance/interest revenue			\$	150,000
B	446010	State Aid Other - TDA			\$	1,127,870
C	446445	FTA 5310 Mobility Management Program			\$	129,210
D	493000	Local - Member Agency Contributions, SCAG Reimbursements and Reimbursement for Services Provided			\$	15,000
E Total Revenues					\$	1,422,080
EXPENDITURES						
<u>Administration and Operations</u>						
F	501000/525010	Administrative Staffing and Support (3 fulltime 5 halftime)			\$	515,180
G		- Transit contract admin: grants, reporting, compliance & oversight				
H		- SSTAC Subcommittee Admin				
I		- ICTC Management Committee/Commission Admin				
J		- TDA Finance Admin				
K		- ADA Eligibility Certifications,CTSA Admin, UTN Admin				
L	517055	Insurance - Liability			\$	100,000
M	522000	Memberships, office exp, communications, IT, fuel and maint			\$	33,800
N	526000	Legal notices, interpretive services			\$	4,000
O	528000	Rents, leases and utilities			\$	35,900
P	530005	Regional Plans/Project Coordination, Webinars			\$	4,500
Q	531040	Training/Travel Expense			\$	25,000
R	549000	Equipment			\$	8,000
s Administration and Operations Subtotal					\$	726,380
<u>Professional and Specialized Projects and Services</u>						
T	525010	Payroll vendor fees			\$	6,700
U	525010	Website Consultation (www.imperialctc.org)			\$	3,000
V	525010	Legal Consultation			\$	10,000
W	525065	County GSA accounting			\$	1,000
X	525010	HR consultant services 50%			\$	10,000
Y	525090	CPA/auditors (external)			\$	150,000
Z	525030	PM, Engineering Review and Support			\$	20,000
AA	525010	Drug and Alcohol Audits			\$	12,000
BB					\$	212,700
CC	525010	Bus Stop Information Program (Phase III)			\$	150,000
DD	525010	TDA Triennial Performance Audit			\$	85,000
EE	525010	Passenger Statistical Summary (IVT)			\$	100,000
FF	525010	Update to the Short Range Transit Plan (SRTP)			\$	150,000
GG					\$	485,000
HH Total Projects, Services, Plans and Programs					\$	697,700
II Total Expenditures					\$	1,424,080
						FY 2016-17

This page is intentionally left blank.

ICTC TRANSIT PLANNING AND PROGRAM MANAGEMENT

REGIONAL TRANSIT PLANNING

Regional Transit Planning will continue to be a significant part of the ICTC work program in FY 2016/2017. The proposed products will provide valuable input and guidance to the future transit programs and priorities. The following are the major initiatives in progress and will be underway during FY 2016/2017:

The Calexico Intermodal Transportation Center A grant funded feasibility study for the proposed Calexico Intermodal Transportation Center (ITC) was completed in October 2014. The goal for ICTC and the City of Calexico will be to pursue grant funding for design, right-of-way and construction. The estimated total cost is \$10 million.

Update to the 2009 Regional Coordinated Plan The Plan Update was completed in FY 2014-15. The document can now be used as justification by ICTC and other agencies, for various grants and funding requests and in particular by social service agencies providing transportation to their clients. ICTC will be reviewing the strategic commentary in the Plan Update to potentially adjust services for public transit services.

ADA Demand Management and Eligibility Assessment Study The Study was completed in FY 2014-15. The Commission selected several items for implementation in subsequent years. In FY 2016-17, ICTC staff will be implementing revisions to the ADA certification and eligibility process (forms and documentation), and several changes to the IVT Access website.

Four-Phase Bus Stop Improvement Program In FY 2013-14, ICTC staff developed a plan for a four-phase bus stop improvement program. The phases are as follows:

1. Memorandum of Understanding between ICTC and member agencies on the use of bus stops — This project is ongoing.
2. ICTC Safety and Design Standards Guidelines — This planning effort is an attempt to develop a local source of information on bus and bus stop requirements for planners, public works staff and developers in order to accommodate and incorporate the use of transit buses in member agencies' communities and development plans. This project was scheduled in FY 2013/2014 and completed in FY 2014/2015.
3. Region wide Bus Stop/Terminal inventory including categorization of existing and recommended amenities, photographs, ADA compliance review, GPS coordinates and recommendations for improvements, replacement of all bus stop signage, recommendations for schedule and information technology — This project is scheduled in FY 2016/2017 with completion by Fall of 2017.
4. Research and recommendation into the feasibility of a region wide bus stop maintenance contractor — This project is scheduled to be completed in FY 2016/2017.

Mobility Management Program An FTA 5310 grant was approved and resulted in the creation of a new Mobility Coordinator position. The position interacts on a daily basis with members of the public interested and in need of transit services, social service agencies and transit advocates, provides coordination for mobility training and conducts training and public outreach.

Short Range Transit Plan (SRTP): An update to the 2012 ICTC SRTP is scheduled to get underway in Spring, 2017.

REGIONAL PUBLIC TRANSIT SERVICES



IMPERIAL VALLEY TRANSIT

IMPERIAL VALLEY TRANSIT (IVT) is an inter-city fixed route bus system, subsidized and administered by the ICTC, and currently operated by First Transit Inc., a private for profit service. The service has sixteen (16) wheelchair accessible 40 ft. transit buses and four (4) wheelchair accessible minibuses.

Service is provided from 6:00 AM until approximately 11:00 PM weekdays while Imperial Valley College is in session and 6:00 AM to 5:00 PM on Saturdays, and Sundays within the areas classified as the Primary Zone; a North-South axis throughout Brawley, Imperial, El Centro, Heber and Calexico, and from 6:00 AM until approximately

6:00 PM in the Secondary Zones; outlying cities and communities of Niland, Calipatria, Westmorland, Seeley and Holtville. The outlying Remote Zone communities including the East and West sides of the Salton Sea; Desert Shores, Salton City, Salton Sea Beach and Bombay Beach are served once a week, on a lifeline. Limited Sunday service was implemented in January 2014.

Currently IVT provides, on average 65,000 passenger trips per month.

Free public Wi-Fi is available and a website offers passenger schedule information. For information please call 760-482-2900, or visit www.ivtransit.com.

IMPERIAL VALLEY TRANSIT - BLUE/GREEN and GOLD LINES



This transit system is an extension of IMPERIAL VALLEY TRANSIT. The intra-city system operates utilizing smaller buses and connects to the public facilities and services that are not currently served by the larger bus system.

There are timed transfer points at 7th and State Streets in El Centro, and in Brawley the transfer point is at S. 5th St. and S. Plaza St. for passengers to transfer to

and from both bus systems.

The service is subsidized and administered by the ICTC, and currently operated by First Transit Inc., a private for profit service. Currently the service provides, on average 3,500 passengers trips per month.

A website offers passenger schedule information. For information please call 760-482-2900, or visit www.ivtransit.com.

REGIONAL PUBLIC TRANSIT SERVICES



IVT ACCESS

The Americans With Disabilities Act (ADA) Comparable Complementary Paratransit Service is a federally mandated service requiring equal access to the public fixed route bus system for individuals with disabilities. The service operates eight (8) wheelchair accessible, paratransit buses as a demand response service, in tandem with the fixed route bus system. The service is available to disabled passengers who complete a certification process and are then certified as eligible.

The service area and hours are the same as the fixed route bus system. A website offers passenger eligibility forms and information at www.ivtaccess.com

Currently the service transports, on average 2,500 passengers per month.

The service is subsidized and administered by the ICTC, and currently operated by First Transit Inc., a private for profit service.

For trip information call 760-482-2908 For eligibility information, please call 760-592-4494.

YUMA COUNTY AREA TRANSIT (YCAT) TURQUOISE ROUTE 10 AND BLUE ROUTE 5



In 2012, ICTC joined a partnership with the Quechan Indian Tribe and Yuma County Intergovernmental Public Transportation Authority (YCIPTA) for transit service in eastern Imperial County, and to and from Yuma, AZ. Turquoise Route 10 provides service 2 days a week on Monday, and Wednesday with 2 round trips daily. The round trip originates in Yuma with stops in Winterhaven and Fort Yuma Indian Reservation, and ends in El Centro. Blue Route 5 provides service daily between Winterhaven and Yuma Az. The Blue Route 5 operates between Yuma, the Quechan Indian Reservation and the Winterhaven area daily

IVT and YCAT have route and schedule information available online at www.ivtransit.com and

www.ycipta.org.

For more information please call (928) 783-2235

ICTC TRANSIT PLANNING AND PROGRAM MANAGEMENT

All the public services in the world are useless if people can not get to them. How do seniors get to nutrition sites, if they cannot drive? How do clients get to drug treatment programs if their licenses are suspended?

IVT MEDTRANS

IVT MedTrans is a non-emergency medical transportation service between communities in Imperial County and the large hospitals and medical facilities in San Diego County. Demand response service is provided four (4) days a week, with three (3) pick up spots in Brawley, El Centro and Calexico. Pick up service is available on a limited basis from the home for an additional fare. The service is designed to provide

persons with disabilities, low income and transit dependent persons access to medical facilities and services not available within Imperial County, i.e. Children's Hospital in San Diego.

The service is subsidized and administered by the Imperial County Transportation Commission (ICTC) and operated by First Transit Inc., a private for profit transportation carrier.

For information please call 760-337-1766.



INTRA-CITY DEMAND RESPONSE PUBLIC TRANSIT

IVT RIDE

The IVT RIDE service is a demand response service operating within the Cities of Brawley, Calexico, El Centro Imperial and the West Shores communities of the Salton Sea. The service is available upon reservation for seniors and persons with disabilities.

The IVT RIDE services uses 2015 model low floor cutaway style vehicles, with ramps for the safety and convenience of its passengers. In addition, computer tablets on board buses are linked to computerized dispatch software for efficient and timely dispatching and communication by and between drivers and dispatch staff.

In Brawley El Centro and

Imperial, Service is available Monday through Saturday from approximately 7:00 AM to 5:00 PM

In Calexico, service is available from Monday through Sunday from approximately 7:00AM to 5:00PM.

In the West Shores Communities, service is available Tuesdays and Thursdays from approximately 7:00AM to 5:00PM.

The service is subsidized and administered by the Imperial County Transportation Commission (ICTC) and operated by First Transit Inc., a private for profit transportation carrier.

For information please call 760-337-1760.



Bicycle and Pedestrian Projects (TDA-LTF Article 3)

On an annual basis three percent (3%) of the Local Transportation Fund (LTF) is set aside for the development of bicycle and pedestrian related projects. Each year in the month of September, the member agencies submit candidate projects. These projects are approved in a public process by the Imperial County Transportation Commission (ICTC). Member agencies then submit claim forms for

approved projects throughout the fiscal year. Typically agencies submit projects to create curb cuts for disabled access where currently none exists. In addition, member agencies have completed a Master Bicycle Plan. For further information please contact the specific public works department in each community.



Local Bus Stop Benches and Shelters Program (TDA-LTF Article 8e)

The ICTC created a bench and shelter program to facilitate the installation and maintenance of bus stops for the regional public transit services. The program sets aside funding annually for the member agencies. This funding can be used for the installation of new bus stops, and the upgrade and refinement of existing stops. This includes adding benches and shelters

and general maintenance i.e. painting red curbs. Bus stops are identified and located by authorized agency personnel according to approved industry standards. At this time each agency is responsible for the bus stop locations in their respective jurisdictions. Each agency chooses the amenities and aesthetics desired as per local requirements and values.



Capital Improvement Program - Past Accomplishments

7th and State Streets Intermodal Transfer

Terminal - El Centro

In January 2014, ICTC and the City of El Centro completed a multi-bus off street transfer facility at 7th and State Streets in El Centro. The facility provides the opportunity to transfer from the public intra city transit system; the IVT Blue and Green Lines, to the public intercity transit system; Imperial Valley Transit.



Brawley Transfer Transit Terminal - S. 5th St. and S. Plaza Street, Brawley CA

In December 2013, ICTC and the City of Brawley completed a unique off street transfer facility at S. 5th St. and S. Plaza Street. The facility provides the opportunity to transfer from the public intra city transit system; the IVT Gold Line, to the public intercity transit system; Imperial Valley Transit.



Imperial Valley College Intermodal Transit Terminal – East and West sides of the Campus

In 2012, ICTC and the Community College created a set of transfer facilities on both the East and West sides of the campus. The facility provides the opportunity for college students to get to and from the various communities and Cities in Imperial Valley on the public intercity transit system; Imperial Valley Transit.



ICTC TRANSIT PLANNING AND PROGRAM MANAGEMENT

Capital Improvement Program FY 2016/2017

Imperial Transit Park

The City of Imperial requested a federal FTA 5309 earmark in the amount of \$974,000 for the acquisition of right of way, design and construction of the Imperial Transit Park. This project is anticipated to serve a local IVT Red line circulator bus system, as well as, the regional Imperial Valley Transit buses. ICTC has also approved the use of a match amount from State Public Transportation Modernization, Improvement and Service Enhancements Account (PTMISEA) funds for the in the amount of \$243,000. In addition, ICTC recently received a grant for the project from State California Transit Security Grant funds (CTSGP) in an amount of \$133,000 for solar lighting and security cameras. This brings the total budget for the project to \$1.35 million.

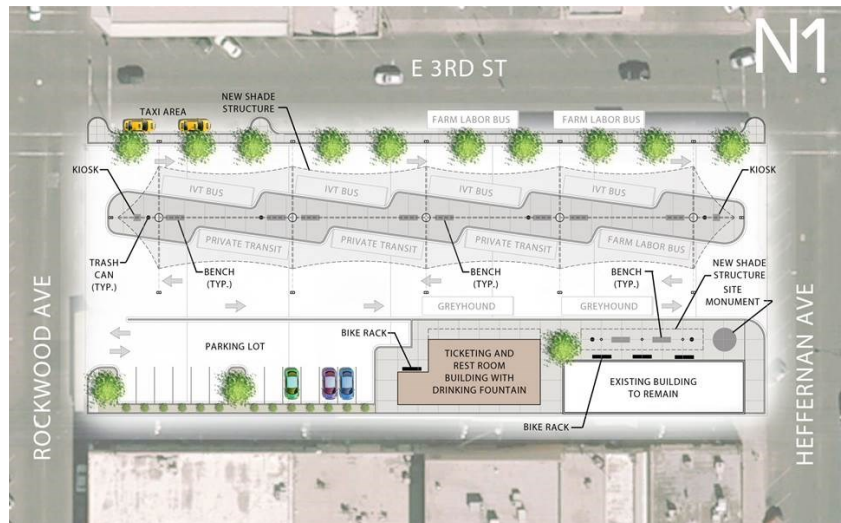


A site for the Imperial Transit Park will be identified and design will be completed in FY 2016/2017.

Proposed Calexico Intermodal Transportation Center (ITC)

The proposed Calexico Intermodal Transportation Center (ITC) will facilitate the movement of pedestrians and access with public and private transit services: those crossing to and from Mexico; those being dropped off and picked up (farm labor, and community college students; and those using IVT regional services to/from cities throughout Imperial Valley and beyond for work, shopping and social services.

The Feasibility Study was completed and approved by the City of Calexico and ICTC in October 2014. ICTC has acquired funding for Design—Preliminary Engineering. Design is scheduled to begin early 2017.



ICTC TRANSIT PLANNING AND PROGRAM MANAGEMENT

ADMINISTRATION / OPERATIONS / PROGRAMS:

Staff will continue to coordinate the various subcommittees, administer the transit services contracts, monitor for compliance issues, coordinate various consultant prepared technical documents, provide technical assistance to public and private service providers and coordinate the disability eligibility certification process. There are several new planning projects scheduled for this year. Staff time is dedicated to finalizing the projects and plans currently in progress and getting the new projects under way. Staff time is also implementing projects identified in previous plans and studies.

The following is a list of planning and technical studies or projects recently underway or completed to date :

1. City of Calexico IVT Garnet Line Circulator - Pursuit of Funding
2. City of Imperial IVT Red Line Circulator - Pursuit of Funding
3. Imperial Valley/San Diego State University - IV Transit Shuttle Analysis - Completed in FY 2015/16

The following list details the planning studies scheduled in future years which are not included in these budget figures

1. Update to the 1995 IVAG TDA Guidebook
2. Update to the 2012 Short Range Transit Plan
3. Evaluation/Analysis of Public Transit Fare Increase
4. Conversion of Bus route map to GIS format



**IMPERIAL COUNTY
TRANSPORTATION COMMISSION**
FY 2016/2017 OVERALL WORK PLAN AND BUDGET

APPENDICES

APPENDIX A

FY 2016-17 Imperial County Transportation Commission Cost Sharing Agreement

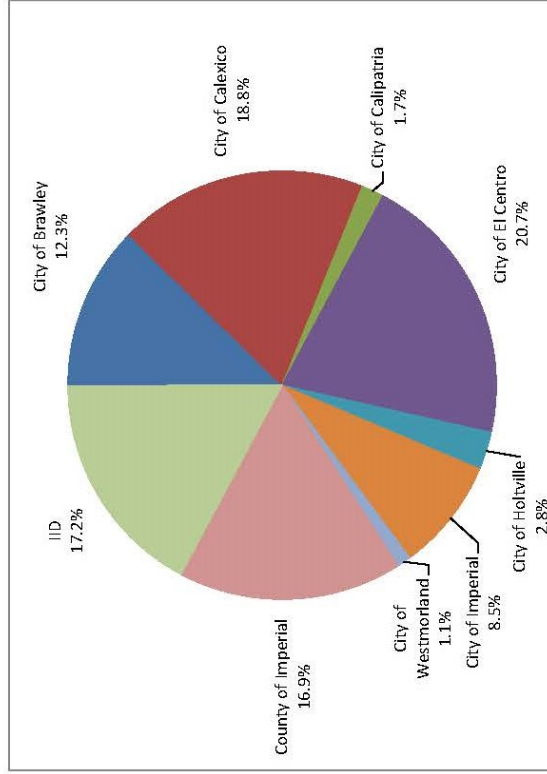
OPTION 3 (Population Distribution)			
AGENCY	*POPULATION	%	Annual Base AMOUNT
City of Brawley	26,392	14.9%	\$ 14,903
City of Calexico	40,111	22.7%	\$ 22,650
City of Calipatria	3,631	2.1%	\$ 2,050
City of El Centro	44,354	25.0%	\$ 25,046
City of Holtville	6,093	3.4%	\$ 3,441
City of Imperial	18,134	10.2%	\$ 10,240
City of Westmorland	2,256	1.3%	\$ 1,274
County of Imperial	36,117	20.4%	\$ 20,395
**IID	0	0.0%	\$ -
Total	177,088	100%	\$ 100,000

AGENCY	Adjusted %	Annual Adjusted AMOUNT	Quarterly Billing Amount
City of Brawley	12.3%	\$ 12,342	\$ 3,085.61
City of Calexico	18.8%	\$ 18,758	\$ 4,689.56
City of Calipatria	1.7%	\$ 1,698	\$ 424.52
City of El Centro	20.7%	\$ 20,743	\$ 5,185.63
City of Holtville	2.8%	\$ 2,849	\$ 712.36
City of Imperial	8.5%	\$ 8,481	\$ 2,120.13
City of Westmorland	1.1%	\$ 1,055	\$ 263.76
County of Imperial	16.9%	\$ 16,890	\$ 4,222.60
**IID	17.2%	\$ 17,183	\$ 4,295.85
Total	100%	\$ 100,000	\$25,000.00

* population from Dept of Finance May 2016

** IID percentage is based on an average of the 4 largest agencies = 36,224 which equates to 17.2% and reduces the base amount for the remaining member agencies to \$82,819

Brawley	26,392		
Calexico	40,111		
El Centro	44,354		
County	36,117		
	<u>146,974</u>		
average	36,744		
add IID average of the population to total population, then divide to get %			
	177,088	36,744 /	213,832
	<u>36,744</u>		17.2%
	213,832	\$ 100,000 *	17.2%
		\$	17,183
		\$	100,000 -
		\$	17,183
		\$	82,817



formula approved by the ICTC May 2010 for \$150K reduced in FY 2013-14 to \$100K